

Cable avoidance reaches a new level



Three world class cable avoidance tools

C.A.T³ | C.A.T³V | C.A.T³+



Radiodetection

Avoidance Scan™

Search in Power, Radio, and Genny modes simultaneously for improved safety and faster surveys.

StrikeAlert™

Alerts the user to shallow power cables by flashing an alert icon.

Precision locate

Improved pinpointing of buried services and exceptionally fast sound and meter response.

Optimised locate

Operates effectively in congested sites, and sites with overhead cables.



Introducing a new generation of products with ground breaking features – delivering improved safety, faster surveys and simpler operation.

Buried Utilities represent a major hazard to construction workers the world over. Poorly planned excavations can cause cable or pipe damage resulting in costly repairs, delays and personal injury.

The C.A.T and Genny range are designed to locate these services so that they can be avoided.

The C.A.T (Cable Avoidance Tool) can detect signals naturally radiating from metallic services or the Genny can be used to apply a distinctive signal that the CAT can detect.

The C.A.T and Genny has become the industry standard pipe and cable avoidance tool, recognised as the leader providing performance, ruggedness and reliability, together with affordability and low cost of ownership.

The C.A.T³ is the latest in a line of continuous improvements. The C.A.T³ utilises the latest technologies to bring you the most optimised cable avoidance tool in the market place today.

AvoidanceScan™

This new feature allows the user to sweep an area searching for Power, Radio and Genny signals simultaneously, dramatically speeding up pre dig survey times and encouraging the full use of all three modes reducing costs and improving safety.

StrikeAlert™

Although work practices and guidelines insist power cables are buried below a certain depth, a common cause of cable strike is shallow cables. The StrikeAlert™ feature alerts the user to shallow power cables by flashing the ALERT icon on the display of the C.A.T³V or C.A.T³+

LOCATE QUALITY

Cutting edge technology within the new C.A.T³ ensures fastest possible processing of data. This has resulted in exceptionally fast sound and meter response, improved precision pinpointing together with a smoothness that puts the user in complete control.

LOCATE QUALITY - fast sound and meter response

DYNAMIC RANGE:
120dB (@ 10Hz bandwidth)

SELECTIVITY:
141dBrms / √Hz

SENSITIVITY:
5x10⁻¹⁵ Tesla (32,768Hz, 1Hz bandwidth)

ENHANCED SIGNAL PROCESSING

Latest and patented signal processing techniques have given the C.A.T³ the ability to reject unwanted signals to a level never achieved before. This has optimised the C.A.T³ for operation in the most demanding of environments such as congested sites and sites with overhead electrical cables.

BACKLIGHT

Poor light conditions can lead to misread information from the meter. The auto switching backlight minimises these effects and allows the continued use of the C.A.T³ into the night.

PULSE/CONTINUOUS SWITCH ON GENNY

This switch allows the user to select the setting to their individual preference and to optimise battery saving. The new Genny is compatible not only with all the different versions of 33kHz C.A.T³ but also all previous versions of 33kHz C.A.T.

REAL SOUND

“Real Sound” means the sound you hear is derived from the signal radiating from the cable or pipe. With very little experience this very important feature helps the user distinguish the signal from random background noise.

BATTERIES

Fed up with fumbling around with eight AA Cells? Well the new C.A.T³ uses just two D Cells. Giving maximum use at minimum costs. Compatibility with the Genny batteries means that you only need buy one type of battery increasing convenience and reducing stock levels. New battery low indicator alerts when battery is getting low.

FOUR OPERATING MODES – INCLUDING THE ALL-NEW AvoidanceScan™



In the P mode the C.A.T³ detects 'power' signals that are being radiated by loaded cables.



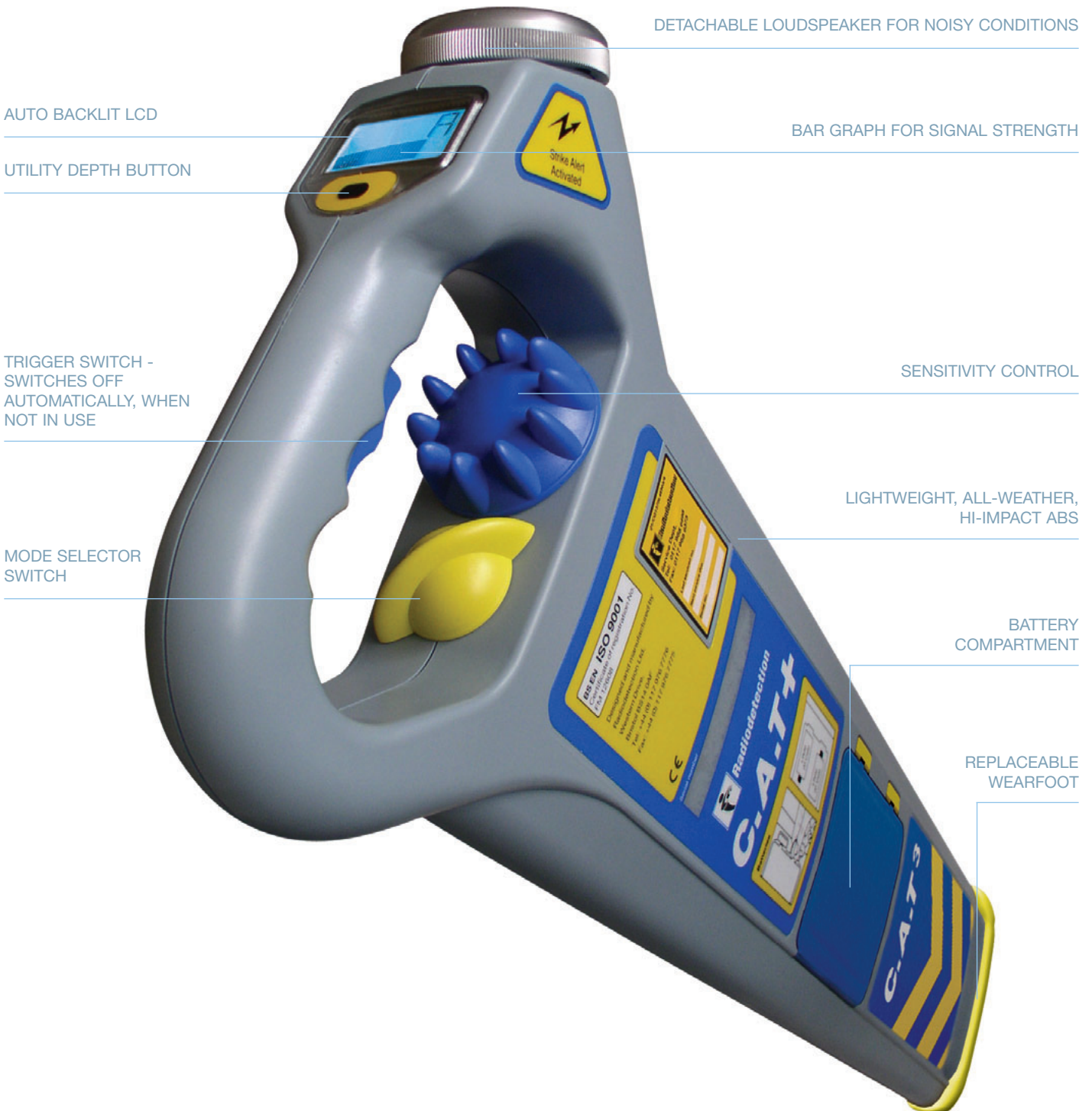
In the R mode the C.A.T³ detects VLF radio signals re-radiated by buried metallic pipes and cables.



In the G mode the C.A.T³ detects a tone radiated by the Genny+ to a buried conductor.



In AvoidanceScan™ Mode P, R and G operate simultaneously providing faster surveys.



AUTO BACKLIT LCD

UTILITY DEPTH BUTTON

TRIGGER SWITCH - SWITCHES OFF AUTOMATICALLY, WHEN NOT IN USE

MODE SELECTOR SWITCH

DETACHABLE LOUDSPEAKER FOR NOISY CONDITIONS

BAR GRAPH FOR SIGNAL STRENGTH

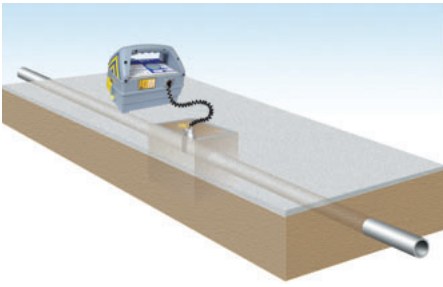
SENSITIVITY CONTROL

LIGHTWEIGHT, ALL-WEATHER, HI-IMPACT ABS

BATTERY COMPARTMENT

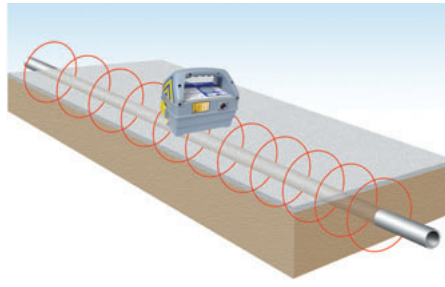
REPLACEABLE WEARFOOT

APPLYING THE TRACE SIGNAL



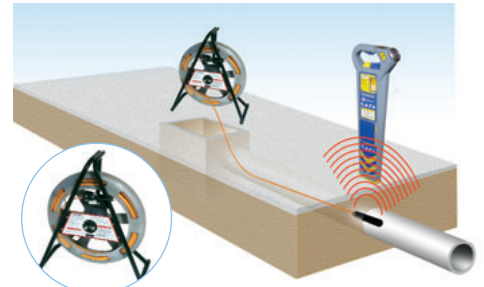
DIRECT CONNECTION

A very effective method for connecting to a valve, meter, junction box or other access point. Curly leads are compact and easier to handle and pack away.



INDUCTION

A convenient and quick way of applying the Genny³ signal to pipe or cable, where direct connection or signal clamping is not possible.



FLEXITRACE (Optional)

A self-contained flexible rod and transmitter alternative for tracing non-metallic pipes. Energised by connecting to the Genny³. The small diameter transmitting head allows access to very small diameter pipes of 15mm or above.

ON/OFF SWITCH

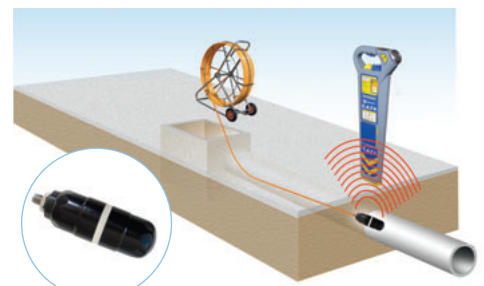
LOUDSPEAKER

BATTERY COMPARTMENT

STORAGE COMPARTMENT

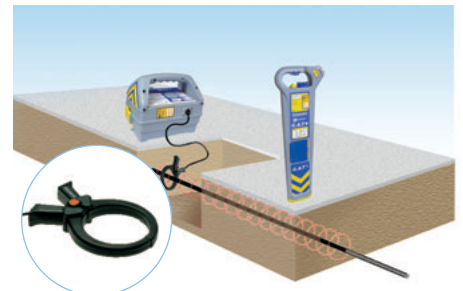
PULSE/CONTINUOUS SWITCH FOR INDIVIDUAL SELECTION LOCATED IN STORAGE COMPARTMENT

DIRECT CONNECTION SOCKET



MOUSE (Optional)

The mouse is a self-contained transmitter which is connected to a push rod and inserted into a non-metallic pipe or duct structure. The mouse can then be detected using the C.A.T³.



SIGNAL CLAMPING (Optional)

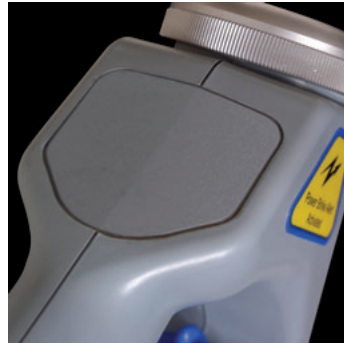
Applies a Genny³ signal safely to a pipe or live cable up to 76mm diameter without interrupting the supply.



LIVE CABLE CONNECTORS (Optional)

For applying the transmitter signal to a live cable, the most certain method of locating a power distribution system in a street.

A FULL RANGE OF OPTIONS



	C.A.T ³	C.A.T ³ V	C.A.T ³ +
POWER	●	●	●
RADIO	●	●	●
AvoidanceScan™	●	●	●
GENNY	●	●	●
ACTIVE DEPTH			●
StrikeAlert™		OPTIONAL	OPTIONAL
METER WITH BACKLIGHT		●	●

C.A.T ³ TECHNICAL SPECIFICATIONS			LOCATING DEPTH GUIDE (M/YDS)	
MODE	FREQUENCY	SENSITIVITY @ 1m	GOOD CONDITIONS	POOR CONDITIONS
POWER	50 HZ - 3.5 KHZ	7.5 mA	3	2
RADIO	15 - 30 KHZ	25 µA	2	1
GENNY ³	32.768 KHZ ± 20 HZ	5 µA	3	2
Avoidance Scan™	P/R/G COMBINED	AS ABOVE	AS ABOVE	AS ABOVE
LOCATE ACCURACY: ±10% of depth.				
DEPTH ACCURACY: on undistorted signal and with no adjacent signals. Line - 5% 0.1 m to 3 m (4in to 10 ft), Sonde - 5% 0.1 m to 7 m. (4in to 16 ft)				
BATTERIES: 2 x LR20 (D) 1.5 V alkaline. 40 hours life, nominal @ 20°C (68°F) intermittent use. Compatible with D type NiMH rechargeable batteries.				

GENNY ³ TECHNICAL SPECIFICATIONS		
DESCRIPTION	FREQUENCY	REMARKS
INDUCTION	32.768 kHz	Auto-selected without connection lead
CONNECTION	32.768 kHz	Auto-selected by inserting connection lead
QUALITY CONTROL:	ISO 9001/EN29001	
POWER OUTPUT:	0.1 W (automatic impedance matching on connection)	
BATTERIES:	4 x LR20 (D) 1.5V alkaline. 30 hours nominal life at 20°C (68°F) intermittent use	
WARRANTY:	12 months	

WARNING

- Increased risk of property damage, death, or serious injury may result if buried utilities, pipes, and cables are not properly located before digging.
- Make sure to read and follow all instructions and warnings in the owner's manual when using the C.A.T³ and Genny³.
- The C.A.T³ detects most buried cables and conductors, BUT SOME CABLES AND CONDUCTORS (EVEN LIVE ONES) DO NOT RADIATE SIGNALS, SO THE C.A.T³ WILL NOT DETECT THEM. Also, the C.A.T³ does not indicate whether a signal comes from a single cable or conductor or from several cables or conductors buried in close proximity to each other.
- When using the C.A.T³, check whether the StrikeAlert™ feature is activated by looking for the 'StrikeAlert™ Activated' labels situated either side of the display.
- The StrikeAlert™ feature is activated by cables or conductors radiating a power or Genny signal that the C.A.T³ can detect, BUT NOT ALL LIVE CABLES AND CONDUCTORS RADIATE A SIGNAL THAT THE C.A.T³ CAN DETECT. THEREFORE, NON-ACTIVATION OF THE StrikeAlert™ FEATURE DOES NOT GUARANTEE THAT THE AREA IS CLEAR OF SHALLOW OR LIVE CABLES OR CONDUCTORS.
- Even if using a C.A.T³ and Genny³, ALWAYS DIG WITH CAUTION.
- Call your local support number (available from www.radiodetection.com) for questions regarding the proper use, maintenance, and repair of the C.A.T³ and Genny³.

World leaders



Radiodetection is a proud member of the SPX group of companies, which provide technical products and service solutions worldwide.

Radiodetection and its associated companies specialise in the design and manufacture of products for the location and maintenance of underground pipes and cables. Our aim is to be viewed as the supplier of choice of "high performance" quality equipment using advanced product technologies. We are also committed to both design innovation and customer support.

To see the full range of products and services provided by Radiodetection group visit www.radiodetection.com

Technical support



C.A.T³ and Genny³ users have easy access to technical support. A call to your regional representative, or the Radiodetection head office, will put you in contact with our team of field-experienced technical experts.

Servicing and repair



Radiodetection has a team of factory-trained service technicians and a dedicated service facility accredited to ISO 9000. Turnaround is fast, and costs are very competitive. All repairs carry a six month warranty.

Training

CITB

C.A.T³ and Genny³ training for your operators and training personnel is available on your site, or at Radiodetection's headquarters. Training, by qualified instructors, usually lasts half a day. Each trainee receives a certificate to confirm they have received training on a course registered with CITB.

Radiodetection Ltd.

Western Drive, Whitchurch
Bristol BS14 0AF
United Kingdom
Tel: +44 (0) 117 976 7776
Fax: +44 (0) 117 976 7775
Email: sales.uk@radiodetection.spk.com

Radiodetection

RR#2 Box 756, Bridgton Commerce
Center, Bridgton, Maine 04009, USA
Tel: (207) 647-9495
Toll Free: 877-247-3797
Fax: (207) 647-9496
Email: Bridgton@radiodetection.spk.com

Radiodetection (China) Ltd.

Room 708, CC Wu Building
302-308 Hennessy Road, Wan Chai
Hong Kong SAR, China
Tel: 00852 2803 5881
Fax: 00852 21109681
Email: sales.uk@radiodetection.spk.com

Radiodetection (Japan) Ltd.

Room 203, Maida Building
7-25, Hiroshiba - Cho Suita, Osaka
564-0052, Japan
Tel: +81 (0) 6 6192 0211
Fax: +81 (0) 6 6192 0212
Email: sales@radiodetection.co.jp

Mactek Pty. Limited

A Subsidiary of Radiodetection Ltd.
Unit 20, 14 Jubilee Ave, Warriewood
NSW 2102, Australia
Tel: +61 (0) 2 9979 8555
Fax: +61 (0) 2 9979 7733
Email: mactek@mactek.co.au

Radiodetection Sarl

13 Grande Rue, 76220
Neuf Marche, France
Tel: +33 (0) 232 8993 60
Fax: +33 (0) 235 9095 58
Email: info.fr@radiodetection.com

Radiodetection B.V Benelux

Industriestraat 11, 7041
GD's-Heerenberg, Netherlands
Tel: +31 (0) 314 66 47 00
Fax: +31 (0) 314 66 41 30
Email: info@radiodetection.nl

Radiodetection Sp z.o.o

ul.Knapowskeigo 23
60-126 Poznan, Poland
Tel: +48 (0) 61 8668298
Fax: +48 (0) 61 8668279
Email: sales.pl@radiodetection.com



Radiodetection

www.radiodetection.com