

PANORAMIC 3910 - IT



The supremacy of ideas

# PANORAMIK

P 39.10

PROVISIONAL INFORMATION



# SPECIFICATIONS AND PERFORMANCE

PROVISIONAL INFORMATION



## Cab

- Conforming with ISO 3449 (FOPS) & ISO 3471 (ROPS)
- Electromechanical joystick controller

## Boom

- Telescopic sections sliding upon adjustable low-friction wear pads
- Hydraulic pipes and electrical cables are all mounted within the boom for maximum protection
- Integral hydraulic chassis sideshift system

## Fork carriage

- Standard cab-operated hydraulic 'Tac-lock' attachment locking/unlocking system mounted on fork carriage
- Standard single boom end mounted double-acting hydraulic service with quick attachment connectors

## Chassis frame levelling

- Hydraulically operated from the cab

## Stabilisers

- Independent control with safety lock when the boom is raised

## Forks

- 1200mm long floating-style forks: section 130 x 50 mm
- Manually adjustable fork spread range: 450 - 1050 mm

## Steering

- Four-wheel steering with automatic resynchronisation of the wheels in case of misalignment. Three cab-selected steering modes

## Engine

- Four-cylinder Euro 3 emission direct injection water-cooled turbo diesel rated at 74.9 kW (102 HP) at 2400 rpm (97/68/CE)

## Transmission

- Hydrostatic transmission with stepless adjustment from standstill to maximum speed simply via the accelerator pedal
- Mechanical two-speed range change gearbox
- Potentiometer for fine control of travel speed
- Inching -pedal system for control of forward speed, independently of the engine speed

- Finger-Touch control system for changing the direction of travel without removing a hand from the steering wheel

- Permanent four-wheel drive
- Portal-style axles give an exceptional ground clearance

## Braking system

- Hub mounted, hydraulically actuated service disc brake on each wheel acting upon the differential output shaft
- Automatic 'spring-on' disc parking brake on the principal transmission drive shaft, hydraulically disengaged

## Hydraulic system

- Gear pump
- Maximum flow rate: 100 lpm
- Maximum system pressure: 210 bar

## Electrical system

- 12 volt 108 Ah battery, 90 A alternator
- Road lighting system complete with rotating beacon
- Manual battery isolator switch

## System capacities

- Hydraulic system oil: 110 litres
- Diesel tank: 150 litres
- Hydrostatic system oil: 12 litres
- Engine oil: 8.5 litres
- Engine coolant: 12 litres

## Tyres

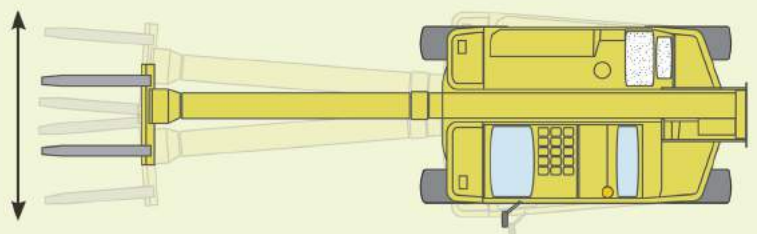
- 405/70-24

## Principal options

- Differential lock on rear or front/rear axles
- Air conditioning system
- Roof window wiper
- Pneumatic suspension seat
- BSS Boom Suspension System or EAS Electronic Active Suspension (front axle)

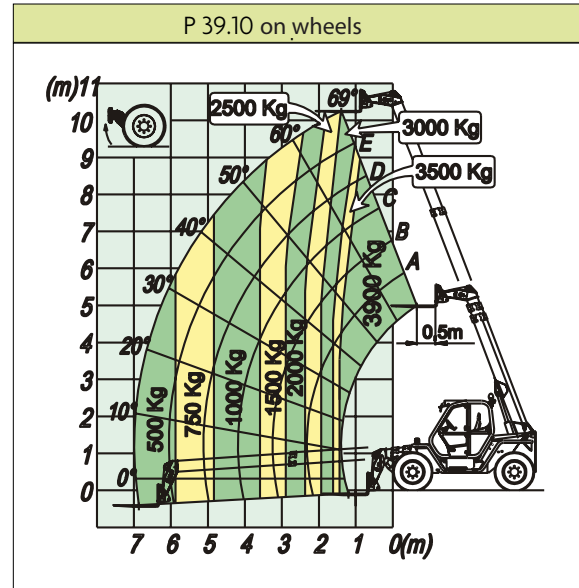
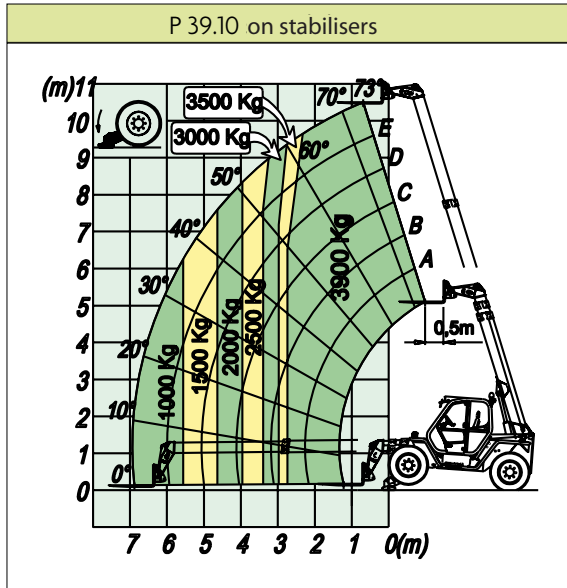
## Integral Chassis Sideshift - exclusive to Merlo

Using the unique chassis sideshift feature, the telescopic boom can be pivoted sideways with respect to the longitudinal axis of the machine - repositioning the payload with great precision and without the necessity of physically moving the machine. The use of this sideshift feature has no deration upon the payload of the machine or the load charts.



Maximum sideshift (boom extended)  $\pm$  265 mm

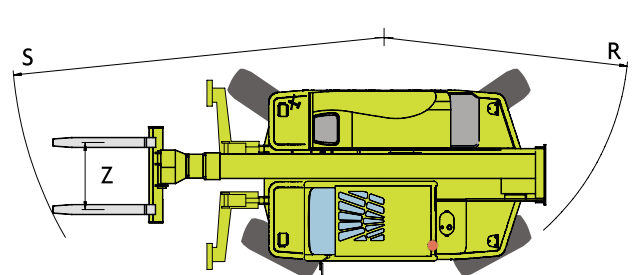
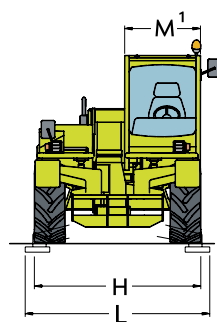
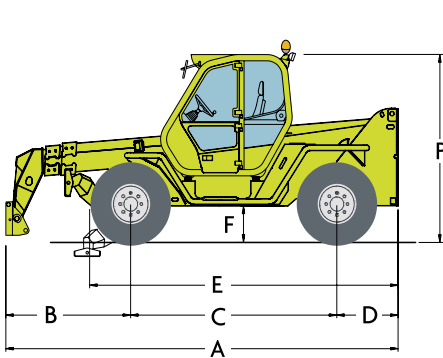
PROVISIONAL INFORMATION



PANORAMIC		P 39.10
<b>Weight</b>		
Operating weight (with forks)	kg	7600
<b>Performance</b>		
Maximum capacity	kg	3900
Maximum lift height	m	10,4
Maximum reach	m	6,9
Lift height with maximum load	m	10,4
Reach with maximum load	m	2,7
Capacity at maximum lift height	kg	3900
Capacity at maximum reach	kg	1000
Euro 3 emission diesel engine		turbo
Power at 2400 rpm (97/68/CE)	kW/CV	74,9/102
<b>Travel speed</b>		
1 <sup>st</sup> range	km/h	7
2 <sup>nd</sup> range (governed speed)	km/h	25

PANORAMIC		P 39.10
<b>Dimensions</b>		
A	mm	4510
C	mm	2750
E	mm	3840
F	mm	505
H	mm	2230
L	mm	2420
M	mm	995 <sup>(1)</sup>
P	mm	2415
R	mm	4050
S	mm	4850
Z	mm	850

<sup>(1)</sup> Internal cab width



The electro-hydraulic Finger-Touch system reverses direction without the need to take a hand off the steering wheel



Frame levelling and compact stabilisers ensure stability by levelling the chassis on sloping ground



The engine is mounted low down on the right of the boom for easier service access

